



Feeder Reinforcement Kit

#IS20
(PATENTED)

#VR48
(PATENTED)

www.polelifesystems.com

MAIN POLE TOP REINFORCEMENT FOR LARGER WIRE- 336 OR GREATER

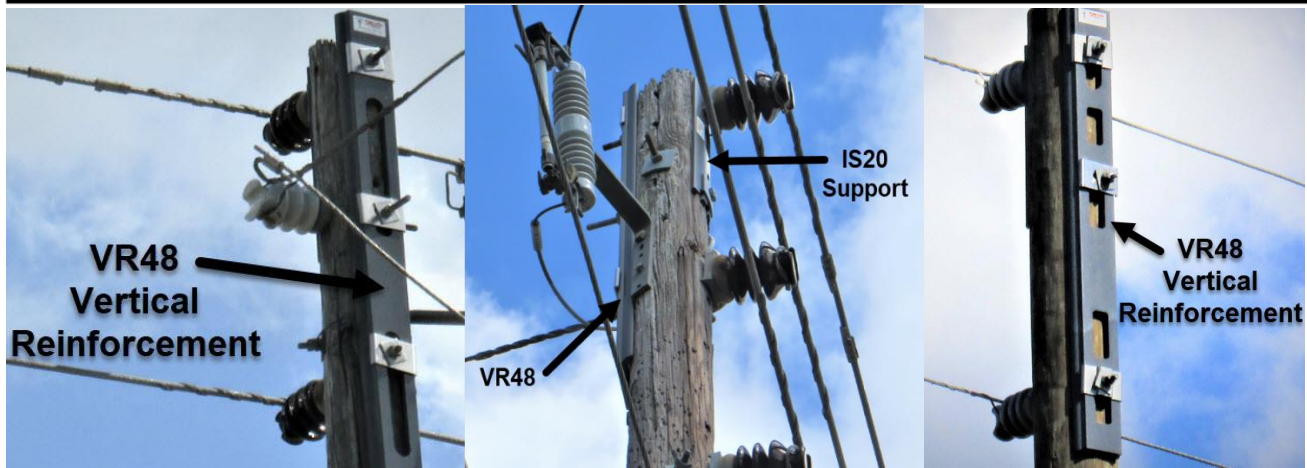
Can be used for any wood Pole damage caused by deterioration, woodpeckers, cracking, storm damage, etc.



Vertical Construction – Pole Life Systems is an easily installed system that lowers the structural attachment point in all damaged top poles, while maintaining the conductors in their current position. Installing the IS20 along with a VR48 or VR72 will bring back structural strength to your feeder pole tops. Savings to the utility company is approximately \$4,000 per pole when used in place of replacement. Install a pole cap and you have permanently restored your pole tops extending the useable life of the pole and eliminating future O&M expenses. This can be a Capital expense investment.

Product Details: Material is solid 3/8" & 1/2" thick high strength composite product, non-conductive, light weight, fire retardant, corrosion free, low cost and structurally rated to 5,000 lbs. Hardware bolts, washers, coils not included, compatible to all utility hardware and specifications.

Part Number	Slot/Bolt Width	Dimension (inch)			Approx. Ship Wt. Lbs. Each	Standard Package	ANSI Tested Strength Rating Minimum Ultimate (LBS)			Average Tensile Strength	Average Flexural Strength
		L	D	W			Vertical	Longitudinal	Transverse		
IS20	0.875	20	3/8	5	2.2	10 pcs.	5100	1200	1350	84,000 PSI	142,000 PSI
VR48	0.8125	48	1/2	5.5	10.75	4 pcs.	5,000	1,900	1,680	84,000 PSI	142,000 PSI



Pole Life Systems, Inc. (727)478-7375